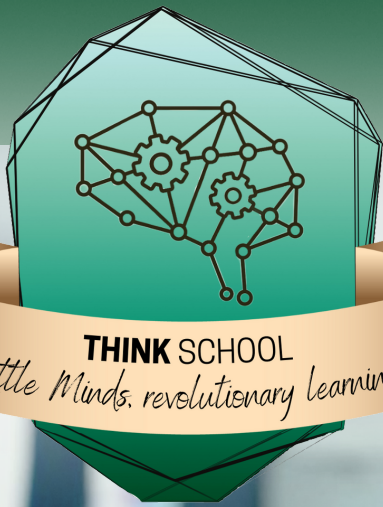


PARENT-STUDENT HANDBOOK



THINK SCHOOL
Little Minds. revolutionary learning

A young girl with brown hair in a ponytail, wearing a pink t-shirt, is seen from the back, raising her right hand in a classroom. In the background, other students are seated at desks, and a teacher is visible. The scene is brightly lit, suggesting a sunny day.

THINKSCHOOL

3586 NOSTRAND AVENUE
BROOKLYN, NY 11229

WWW.WEARETHINKSCHOOL.COM
212-829-3516
WEARETHINKSCHOOL@GMAIL.COM

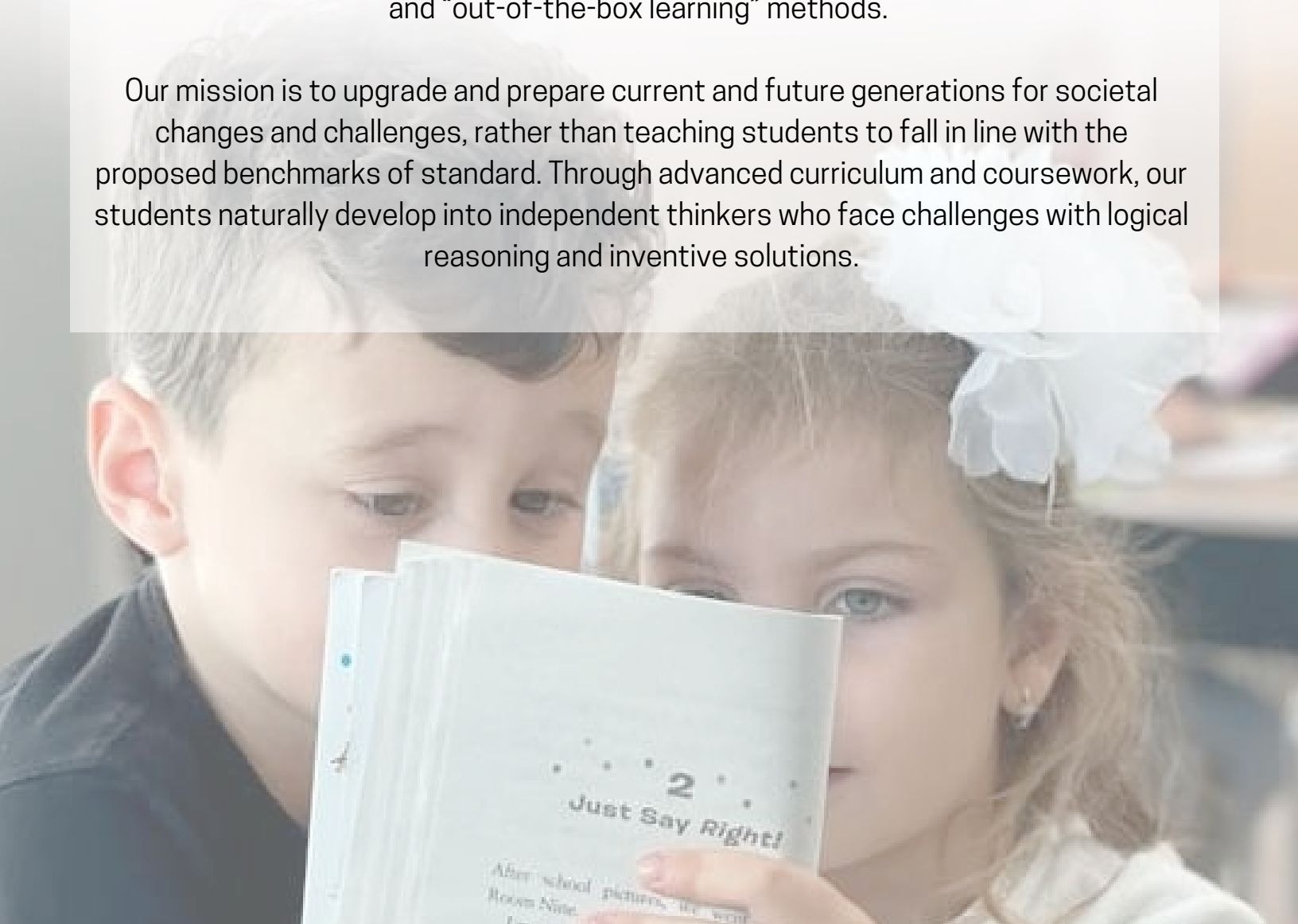
Our Mission

THINKschool was created based on the irrefutable research that a different model is required to educate the different generation of today. Through years of research, data collection, and teaching experience, we have created a school model that develops enlightened and multifaceted students ready for the real world of tomorrow.

To provide our students with a learning environment made for them, we bring forth a carefully cultivated school program for the 21st century and its inherent generations, including a caring and open environment where they build trust with their teachers and feel safe to question whatever comes to mind.

Our curriculum is an attestation to and application of our philosophy and academic goals. Deeply rooted in the goal of producing critical thinkers, we neither relent nor apologize for our forward-thinking and “out-of-the-box learning” methods.

Our mission is to upgrade and prepare current and future generations for societal changes and challenges, rather than teaching students to fall in line with the proposed benchmarks of standard. Through advanced curriculum and coursework, our students naturally develop into independent thinkers who face challenges with logical reasoning and inventive solutions.



Our Philosophy

Since 2015, we have been a part of the community as a tutoring and learning center. This time has allowed us to reflect on the needs of young learners. We apply the varied sciences to the core of our learning principles and instruction to enrich their educational journeys. Through this, they are equipped with the skills necessary to become productive members of society and actively add value to it.

We are not your typical school, and our students are far from typical, too.
Our program best suits families seeking a different kind of education for their children.

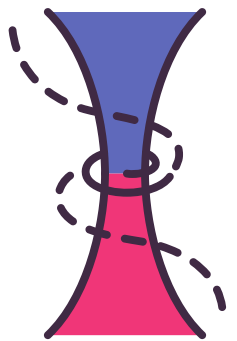
We teach students "in the moment" and allow them to flourish through their interests and skills while learning foundational knowledge. Through a fluid, adaptive program, we compliment core curricula with a myriad of supplemental courses and platforms through which students can expand their way of thinking and apply learnt knowledge.

***Our central goal is simple:
Question everything with the full intent to find an answer.***



Preparation for the future world: The world is ever-changing. Our curriculum, methodologies, and day-to-day operations are crafted with the understanding that we are preparing our students to stand out in the world. We adhere to the rise in demand from our society to be progressive, tenacious, and knowledgeable. Students are taught in a research-based manner while simultaneously being taught to prove points and defend data with research.

Working in parallels: We believe in individual strengths but acknowledge the need for working in cohorts. Students are taught to appropriately discern how their skill sets compliment those of others on the path to answering their questions. As such, we work in "parallels." The world is multi-dimensional and interdisciplinary therefore students are taught to bridge information across multiple fields of study and subject matter. They make valuable connections among their peers and analyze varying perspectives to reach a collective solution. These definitive principles create an environment through which children develop critical thinking while learning the art and benefit of networking.

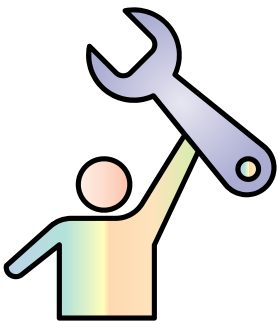


Our Philosophy, Cont'd.



Time management and student autonomy: A successful member of society is one that can manage the expectations of the world, produce knowledge- and research-based data efficiently, and can defend their perspectives coherently, with humility and reason. Our teaching methodologies cultivate learners who will be prepared for the world – for milestones in academia, careers, and interpersonal relationships. Through our day-to-day classroom operations, students see the application of time and effort into developing successful results. They are influenced by their peers and teachers to hold their ground and apply their knowledge where warranted. Coupled with our curriculum and benchmarks for success, students are prepared for a lifetime of inquisitive thinking that will, one day, lead them to be candidates for top universities and careers.

Benchmarks for success, academic and developmental: We value success and advancement, but believe in promoting a child's interest in achieving it. By applying the understanding that, even in a class setting, students are individual learners, we spark motivation by utilizing different learning and teaching styles. Allowing children to be motivated provides an incentive to excel. We have curated a learning map filled with advanced mathematics rooted in logical reasoning, literacy, grammar, and composition through literature- and text-based analysis, a world-view consideration of history, geography, and cultural dynamics in and out of the United States, and an experiment-based, real-world application of the sciences rooted in major and ground-breaking theories. We also believe in the breadth of knowledge available past these core subjects and fill student schedules with supplemental courses that help foster "jack-of-all-trades" mentalities that can later be applied to use in the real world.



We have the unique opportunity to grow with our students and society and adapt our environment, curriculum, and expectations with the changing times.

Furthermore, day-to-day applications of our curriculum offer great flexibility in how they are taught and presented. We adapt to the students' needs within the classroom as well as how their learning can interact with the environment outside of the school building. We are not stuck in the "typical" or the "expected," and we frown upon statements such as "best practices."

Becoming a part of THINKschool opens doors to logical and critical thought and, as we like to say, "all you ever have to do is *think*."

About The Founder



SHIRA SHVARTSMAN, MA, EDM

THINKSCHOOL | THINK&CO. ADVANCED LEARNING | THINK HEROES SUMMER CAMP

A child of Soviet, Moldovian descent, Shira immigrated to the United States from Israel in 1998, mid-first-grade, to the Brighton Beach/Sheepshead Bay area of Brooklyn, New York.

Fast forward nearly 20 years, Shira returned to this community.

A pre-law student turned linguist, turned entrepreneur, turned educational anthropologist, a newly-found passion for education became something larger - a mission to redesign the systemic standard of educating children. Possessing both a BA in linguistics, with a focus on language acquisition, and an MA in forensic linguistics, with a focus on sociolinguistics, Shira delved into the journey of opening a tutoring and learning center with little knowledge of the field of education. Though not technically trained, Shira spent the previous decade working with children in varying capacities, observing development, ability, and growth. What began as an entrepreneurial attempt quickly became something of immense passion - literacy instruction.

Throughout the inception of THINK&Co. Advanced Learning, Shira worked on developing a linguistically-rooted literacy method that has, to date, helped hundreds of young learners acquire and master the oft-tumultuous process of learning to read.

Having observed this effect, and the general acquisition of knowledge in elementary-leveled children, yet understanding that this experience only breached the surface of education, Shira pursued her interests further, completing master and doctoral coursework at Columbia University's Teachers College, through the lens of linguistics and anthropology. Since 2017, Shira dreamt of one day opening a private school that would serve as a platform through which to apply varying methodologies and hypotheses of a new learning model. The world, however, had a different path in store and with the sudden onset of the global pandemic of Covid-19, a dream for the future became an opportunity for the "now."

The goal for THINKschool implements Shira's trifold of beliefs for education -

1) teachers should receive adequate training, support, and supervision as they employ agency in their classrooms and curriculum; 2) young learners should develop within an environment tailored to setting a foundational skillset while simultaneously providing a vast array of interest-based learning opportunities; 3) the traditional school environment should thrive in a care-based, developmentally-concerned environment rather than one driven by standards, where teachers share life knowledge, skills, and stories in a more lax, homelike setting.

Our Staff

At THINKschool, our educators offer a seamless combination of advanced teaching methods in addition to their own subject-matter expertise, personal skills, stories, and experiences.

Our team consists of a School Principal, Assistant Director, Lead Teachers, Subject Teachers, Assistant Teachers, and assistant and administrative staff members.

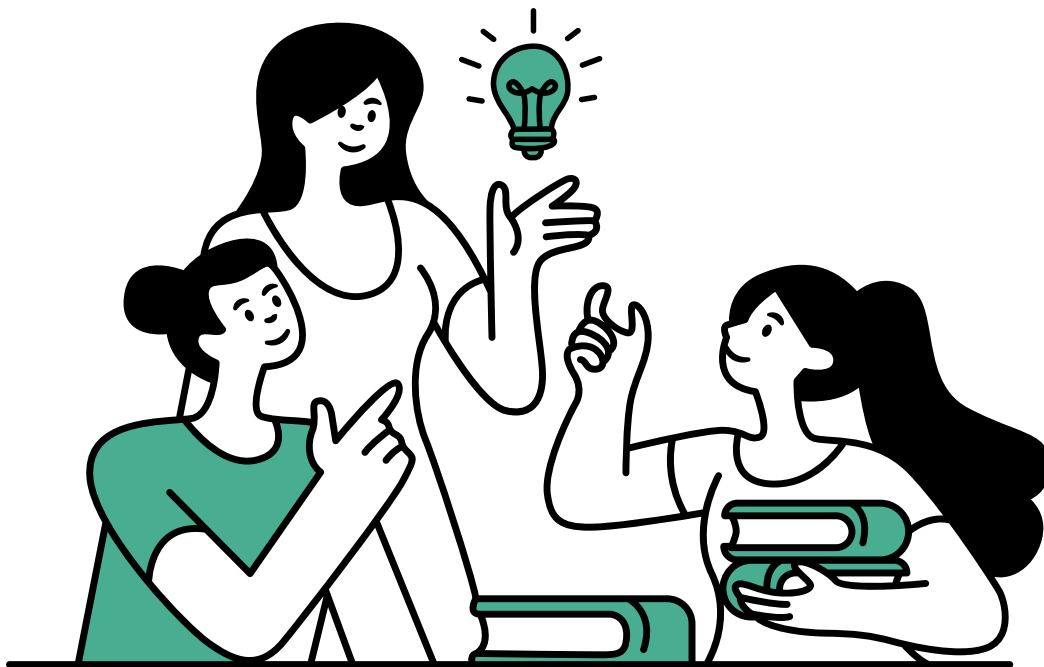
All members of our staff have experience working with young children and their families, and most team members have certification in Advanced First Aid and CPR.

We enjoy and understand how young children learn and grow. Each staff member continues the education process throughout the course of their time with THINKschool by taking continued courses and workshops designed to update skills and knowledge in the realms of education, child psychology and development, and subject-area specific methodologies.

Fingerprinting and background checks of all staff will be conducted in conformity with the law.

Each child deserves an educational team that will help her/him develop specific talents, achievements, and ways of learning to last them throughout their entire life.

Each educator has their own specialty and background, but if a teacher works with us at THINKschool, we have the utmost confidence in their ability to present our programs and methodologies properly to help a child learn and advance by our standards.



An open letter to parents

A slightly lengthy, but important and open, letter to all families considering THINKschool:

Hello, my name is Shira Shvartsman. THINKschool is the brainchild of years of working with students in our community as the owner of a learning company and children's academic summer camp, as well as years of academic research in the fields of education, linguistics, language acquisition, anthropology, and more. This background has afforded me first-hand experience into children's needs and developmental stages. It has allowed me to get to know the parents in our community and what they wish to gather from their child's schooling. It has given me a unique understanding of how children learn and what they want and need to get out of attending schools daily.

Enrolling in THINKschool warrants a different way of thinking about your child's schooling. It requires shifting understanding and expectation and being prepared for the unexpected. I'll explain why.

On a personal level, I have strong opinions about our education system, and I believe that a revolution is warranted. With THINKschool, and what I hope it will grow into, I hope to lend to that revolution. I don't take a single day or element of our school lightly, but I do believe in breaking stereotypes. Should you choose to become a part of it, you should be open to that and be willing to let your child(ren) flourish in slightly unknown waters. But they will be cared for and taught well; they will love coming to school. They will be surrounded by teachers and staff who will love them and ignite an interest for learning and discovery. They will advance and be happy doing so. As a new school and model, we get better every day; we learn every day; we hear parents and their suggestions and consider them all. We evolve with your children and that will never stop, nor should it.

We are not, and will never be, a fully scripted and planned, 100% structured and organized, typical school, because children are not scripted, 100% structural and organized, typical humans. They're individuals and they deserve a learning environment that complements their wacky, whimsical, and exploring minds. That's us - we are a bit wacky, a bit whimsical, and have lots of love and learning to give. We are the true definition of "outside the box" – what we lovingly refer to as "organized chaos."

Parents of THINKschool students should be open to the understanding that our approaches may present a bit unorthodox. We believe in breaking stereotypes. We believe that children are vastly underestimated and that, as educators, our job is to provide them the tools which they will always be able to reflect upon and use to know their worth, establish opinions, and effectively prove their points on any subject matter. We are setting the stage for the type of people our society needs – innovative, logically-inclined, and articulate humans.

What are some of the most noticed differences?

Subject Application. For subjects like English, we deviate from the typical applications of weekly sight words, from typical DBQs and comprehension passages. We root our English curriculum in grammar and textual cohesion. We inspire students to be curious and ask questions about the unknown. We read texts that promote thinking about the world around us and how we factor into it. We reference syntax and semantics for writing. We value creativity in these topics above all. For math, we move away from the common core methods of NYS, instead relying on the logical application of numbers, values, and their applications to the real world. What this creates is a platform through which students are able to tap into their own skills and apply them to problem-solving.



Testing. You will notice that, while we do have testing for certain subjects and at certain points throughout the year, it is not our main concern. We do not believe in testing the way that the traditional school models do. Instead, teachers assess students' progress throughout classes. How they can communicate during subject classes and how they can bring the topics they've learned into discussions with their peers serves as a better assessment than a test based on rote memorization. At the beginning of a year, teachers may give more tests than later in the year. These tests are not used to assess what the students have learned, as that will have already been gathered during class, but how they test, how they apply knowledge, how they interpret what has been taught. The first few tests serve as a tool by which teachers get to know their students. We assure you; those tests do not measure what students have learned past their ability for rote memorization.

What testing such as that, on a consistent basis, can do is lead an otherwise amazing and capable kid to stress studying and impose unnecessary pressure on themselves. Under this stress, students are known to disassociate with the material, develop poor self-esteem, heightened anxiety, and resort to a variety of actions such as cheating. That is not the type of behavior or self-doubt we believe in promoting. Instead, we discuss and apply learned topics to activities; we hold our parallel classes that require knowledge from other subjects in order to complete a particular task. We believe that students learn best by doing and discussing, rather than by cramming for a test that wouldn't do more than showcase their ability to memorize. By taking these approaches, teachers are able to curate lessons to cover any deficits and talk through, explain, and reteach, if necessary, the missed materials. Specifically for science, though there may be periodic tests, the bulk of our "testing" is done through class experiments. We act out scenarios, and apply science to real life, using our hands and creating. Tests are a necessary evil, but we believe that they should be given in moderation and only for subjects or topics that warrant them. Still, our students are advanced and excel.

Teacher-Student Dynamics. Our relationships with students are likewise different than is found in many other schools. Of course, students learn to respect their teachers and, by that understanding, learn to listen, admire, and apply the knowledge their teachers share with them daily. We believe in play, in being loud, in getting dirty, and in running around. We believe in sharing life experiences and stories of how we've grown ourselves.

Classroom Setup. Desks and chairs are a tool for organization and each classroom, of course, possesses them. But we also believe in leniency and the fact that sitting at said desk and chair for hours a day is ridiculous. All classrooms offer flexible seating options, such as wobbly chairs, bean bags, floor mats, bleachers, and more. We are known to even conduct lessons allowing students to sit crisscross apple sauce on top of their desks.

Whatever works.

Student Assessment. We believe in considering the "whole child" and that education should be complementary to a child's learning style. Some children require rigor and high expectations while others flourish under the lifting of pressure. We have high expectations of our students and believe in pushing them to their abilities, but we also believe that each child should be given the opportunity to succeed in their own way. This belief may manifest itself in scenarios such as grading, assignments, consequences for behaviors, etc.

By applying to and enrolling in our school, you understand these facets.

You entrust us with this different learning model, and you agree to come in with an open mind.

I hope to see you on our learning journey as we grow, learn, and improve alongside your child.
Thank you for your trust and for the opportunity to build and showcase the goals of THINKschool.

- Shira Shvartsman

A handwritten signature in black ink that reads "Shira Sh". The script is fluid and cursive, with the first name "Shira" and the last initial "Sh" clearly visible.

[illegible]

WHO CAN APPLY?

All 1st - 5th-grade students who live in New York City can apply to **THINK**school in the spring and summer of 2023 for admission to the 2023- 24 school year. Applications to **THINK**school for this academic year are accepted on a rolling basis. Applications for the following school year are accepted starting in December of 2023. Our school welcomes and serves all NYC students. We actively seek students and families that share our school's vision, mission, and core values.

WAYS TO VISIT THINKSCHOOL

You can visit one of the scheduled open houses or schedule a private tour. We host 3 open houses each year. The days of the open houses will be posted on our website and across all social media platforms with which we engage. Tours are available upon request. Please contact **THINK**school to schedule a time. Private tours last 20-30 minutes.

HOW TO APPLY: NEW STUDENTS

STEP 1: APPLICATION

During this process, **THINK**school administration will make every attempt to accurately describe the program and to communicate directly about what the program offers and what the program does not offer.

1. All prospective applicants should visit our website, www.wearethinkschool.com, where the most important information about our school, program, and more is readily available.
2. Complete and submit an application form alongside a registration fee of \$500. The registration fee is fully refundable prior to the date of the family interview. As of the scheduled day of your interview, and past it, the registration fee becomes non-refundable with no exceptions, however, is applied to the tuition balance. Should **THINK**school not offer the family admission to our school, the \$500 registration fee is then refunded.
3. Submit Authorization for Release of Student Records
4. **THINK**school admissions team will be in contact to schedule your family interview date.

STEP 2: FAMILY INTERVIEW AND STUDENT INTAKE ASSESSMENT

The student and their parent(s)/guardian(s) participate in a structured family interview with the Head of the school. Family and Head of school discuss student preferences, strengths, challenges at home and in the academic setting, and student's emotional triggers. During this time, the Head of the school meets the family, speaks with the parent(s)/guardian(s), and holds an assessing placement exam and interview with the prospective student(s). This exam and interview are used as a factor in making an admissions decision.



Typically within 5-7 business days, families are notified, via email, of the admissions decision. Should a student be denied admissions, for any reason, the registration fee will be promptly refunded. If offered admission, families must pay a non-refundable deposit of \$1,500 per student, which will be applied toward the annual tuition balance. In addition to the deposit, all families will be asked to complete the tuition agreement for the remaining balance for each student.

Important note: **THINK**school reserves the right to withdraw admissions should any new information come to the surface that would have, with prior knowledge, swayed the admissions decisions.

STEP 3: ADMISSIONS PACKET

If a child has been accepted into our program, families will receive an official acceptance letter. The acceptance letter will be accompanied by the Admission Packet and additional information on how to enroll the child. The child is not automatically enrolled when accepted; families must follow the enrollment procedure accompanying the acceptance letter in order to secure enrollment.

1. Provide to the school office a copy of the following records:

- o Grade 1: Most recent kindergarten report card (from the last enrolled school attended)
- o Grade 2: A complete kindergarten report card as well as the most recent first-grade report card (from the last enrolled school attended)
- o Grades 3-5: Two end-of-year report cards and the most recent last grade-level report card
- o For all students in grades 1 – 5: Any special evaluations previously conducted by a previous school or outside agencies (if applicable) such as IEP reports, psychological evaluations, behavioral evaluations, speech or occupational therapy evaluations, and any other relevant reports. Please note that we do not use these reports against the student's admissions decisions unless the student requires services, accommodations, etc. that our school is not prepared or capable of meeting.

2. Submit the Admission Packet to the school Administrator (For the deadline, please refer to the letter accompanying the Admission):

- | | |
|--|--|
| o Birth certificate | o One recent color photo |
| o Student and Family Information sheet | o A current physical examination |
| o Immunization record | o Permissions and Releases Form |
| o Sunscreen/Insect Repellent Form | o Parent(s)/ guardian(s) Trip Consent Form |
| o Student Records Policy Acknowledgment | |
| o Signed Permission for Emergency Medical Treatment form | |
- o Proof of most recent Dental Exam provided by the dental office (Both the Health Examination and Dental Exam are tracked yearly through the student's annual Admission Packet)
 - o Prescription Medication Order Form (must be signed by both licensed prescriber and parent(s)/guardian(s))
 - o A letter signed by the previous school that student has no discipline incidents. This includes but is not limited to suspension and expulsion

3. Download the required learning materials list and school supply list. Please note that all required supplies must be brought to school on the set date provided.

HOW TO APPLY: CURRENT STUDENTS

Students at the **THINK**school must renew their registration every year. In January, families will be required to complete a returning student Application Form for each student, indicating their intent and commitment to remain enrolled in our school for the next school year. On the second Monday in January, the school Administrator will send registration forms to current school families. The registration form and registration deposit must be returned to the school Administrator by the last school day of January. All students will be considered for admission based on their performance, behavior, and ability to meet our curriculum in their prior year, as well as the date by which the registration form and fee are received.

The Principal reserves the right to deny admission, registration, or continued attendance at any time.

If she/he determines that **THINK**school is unable to meet the needs of the student, or if continued enrollment is not in the best interest of the school community, admissions will be denied.

The families will be asked to resubmit Health Records, Application form, Permission and Releases Forms, and a parent(s)/ guardian(s) Consent Form.

NOTE: *Failure to complete the registration documents before the listed deadline will cause the loss of the reserved seat in the upcoming year's class.*

WAITLIST

If a space is unavailable at the time of application, the families are given two waitlist options: “general” waitlist and “expedited admission upon availability” (EAUA) waitlist. With the EAUA waitlist, families are guaranteed a spot should one become available and admissions/enrollment is processed within 72 hours of a spot becoming available.

In order to be added to the EAUA waitlist, the family interview must still be conducted, even without the guarantee of an available spot, in the event that a spot opens up at a later time, and a \$150 registration fee must be paid. If an opening becomes available at any point, students on the EAUA waitlist will be given priority. Should a spot become available, the family will be contacted immediately. Parent(s)/guardian(s) will have a total of 72 hours to respond to the admissions offer. Within these 72 hours, all necessary documents/contracts must be signed and submitted, and the non-refundable security deposit and remaining registration fee, totaling \$1,850 (\$350 registration fee and \$1,500 deposit) must be paid. If these requirements are not met within 72 hours, the family loses their EAUA status, gets pushed to the general waitlist, and the spot is then offered to the next family on the EAUA waitlist, should there be one, or to the first family on the general waitlist.

The general waitlist provides no guarantees of admissions, however, also requires no commitment of any sort. To be placed on the general waitlist, a parent must submit a general waitlist form. It is the responsibility of the parent to ensure that the contact information remains updated. Families on the general waitlist are able to apply should a space open up that is not taken by a family on the EAUA waitlist.

Both the general and the EAUA waitlist will exist from year-to-year only.

PRIORITIZATION OF ADMISSIONS

Assuming the submission of necessary application forms and other required documents, as well as a successful family interview, the following priorities will be given.

First Priority: Children already attending **THINK**school will be offered admission first.

Second Priority: Children with a sibling attending **THINK**school will be offered admission second.

Third Priority: Students who are on a waitlist from the previous year will be offered admission third.

Fourth Priority: New Enrolled students

(a) Applications are accepted on a first-come, first-served basis

(b) The Principal will advise parent(s)/guardian(s) of their student's acceptance or place on the waitlist.

CRITERIA FOR ADMISSION

Our philosophy is to create and foster an environment within which children can learn, grow, and develop interests in an individualized and explorative manner. We hold high standards for our students, however, likewise offer them the environment needed to enhance their own learning styles. As a result, students are welcomed with an open mind for exploration and development. Students will, of course, be required to adhere to our curriculum and meet our standards, however, will be given the opportunity to take the time required on their academic journey. With the assistance of our fluid placement system, all students within the program, including those who advance quickly and those requiring a bit of additional support, will have the opportunity to learn as they go and shift classrooms as needed by level. Should a student fall behind at any point, our director and your child's teacher will set a meeting time to discuss additional options. As always, parent involvement is a crucial aspect of success in our program.

WITHDRAWAL

To withdraw a student from **THINK**school, a parent must submit a written notice (letter or email) 30 days prior to the desired withdrawal date, to the school Administrator. The reason for withdrawing and the intended last day of attendance must be included in the withdrawal notice.

All financial obligations must be taken care of before the student is withdrawn from school. Enrollment at **THINK**school requires a financial commitment for the full academic year. A family is financially obligated and expected to pay tuition for the full ten-month school year, whether the student is enrolled or not.

NON-DISCRIMINATORY POLICY

THINKschool seeks to enroll students with above average capability who are of good moral character. Students are admitted on the basis of academic abilities based on the information gathered at the family interview and prior academic records. We strive to make a fair decision based on the services that our school can provide for each child, as well as what the student can contribute to our program. We offer a rigorous curriculum and high standards. Should a student not be offered enrollment, this decision will be based on our beliefs and understanding that our school would not be the best fit for your child's needs, whether academic, behavioral, or otherwise.

THINKschool does not discriminate on the basis of race, color, national or ethnic origin, or any such identifiable factor in the administration of its educational policies, admissions policies, scholarship and loan programs, athletic and/or other school-administered programs. A commitment is made to provide cultural, academic, economic, and social, emotional diversity within the school.

Students with any special health care needs will be fully considered if it is within the resources of the school to meet their needs. Any important medical information that will enable the school to accurately evaluate its ability to meet the child's needs must be provided by parent(s)/guardian(s) to the school during the application process and not surpassing the time of the family interview. Failure to provide any such information may then be used as a reason to withdraw our admissions decision.

Tuition Costs and Fees



TUITION: COSTS AND FEES



TUITION TERMINOLOGY BASICS:

We put together a quick guide of some common terms you'll see when going through the tuition payment process. Please reference notes and terminology as needed.

School Tuition: cost of the academic classes at THINKschool held from 9:00 a.m. and 3:50 p.m.

Meal Plan Option: One hot meal daily including 1st course and 2nd course and three daily nutrition snacks.

After School: Cost of the After-School Program, running 4:00 - 6:30 p.m. at THINK&Co. Advanced Learning.

Non-Refundable Registration Fee: A registration fee paid upon registration for 2023 – 24 School Year

Non-Refundable Enrollment Deposit: A deposit paid upon enrollment for the 2023–24 school year.

Sibling Discount: A discount offered to families who have two or more children enrolled concurrently.

COST BREAKDOWNS

Tuition \$12,500 annually [\$1,250 monthly for 10 months]

Hot Lunch \$2,750 annually [\$275 monthly for 10 months]

After School \$3,750 annually [\$375 monthly for 10 months]

Included in the annual tuition are the following:

- Core subject classes (ELA, Math, Social Studies, Science)
- Supplemental courses including world cultures, foreign language, psychology, and more
 - Teacher–Student hours for personalization and individual development
 - Parent communication on multiple portals
- A home-like environment with a focus on socio-emotional development
 - Classroom teaching aids/materials to facilitate learning
 - a) Field trip transportation b) STEAM Classes c) Chess Classes
- Special Events: Thanksgiving celebration, Winter holidays celebration, Photo Day, etc.

Not Included in the annual tuition are the following:

- Textbooks and course materials: Students are expected to purchase textbooks, supplemental materials, and other school supplies as needed per grade. The cost for these supplies typically ranges between \$100-\$250 per year, depending on the grade level, class size, course inclusion, and more. The needed materials are assigned and dispersed prior to the start of the school year but are subject to change.

Breakdown of tuition and add-on options



TUITION COST A: ANNUAL TUITION COST

DESCRIPTION	COST TOTAL	DUE DATE
REGISTRATION FEE	\$500	<i>Upon application</i>
ENROLLMENT DEPOSIT	\$1,500	<i>Upon acceptance</i>
REMAINING ANNUAL TUITION	\$10,500	<i>Paid on the 1st, monthly</i>
TOTAL	\$12,500	

TUITION COST B: ANNUAL TUITION COST + MEAL PLAN

DESCRIPTION	COST TOTAL	DUE DATE
REGISTRATION FEE	\$500	<i>Upon application</i>
ENROLLMENT DEPOSIT	\$1,500	<i>Upon acceptance</i>
REMAINING ANNUAL TUITION	\$10,500	<i>Paid on the 1st, monthly</i>
TOTAL WITHOUT MEAL PLAN	\$12,500	
MEAL PLAN	\$2,750	<i>Upon schedule</i>
TOTAL WITH MEAL PLAN	\$15,250	

TUITION COST C: ANNUAL TUITION COST + AFTER SCHOOL

DESCRIPTION	COST TOTAL	DUE DATE
REGISTRATION FEE	\$500	<i>Upon application</i>
ENROLLMENT DEPOSIT	\$1,500	<i>Upon acceptance</i>
REMAINING ANNUAL TUITION	\$10,500	<i>Paid on the 1st, monthly</i>
TOTAL WITHOUT AFTER SCHOOL	\$12,500	
AFTER SCHOOL	\$3,750	<i>Upon schedule</i>
TOTAL WITH AFTER SCHOOL	\$16,250	

TUITION COST C: ANNUAL TUITION COST + MEAL PLAN + AFTER SCHOOL

DESCRIPTION	COST TOTAL	DUE DATE
REGISTRATION FEE	\$500	<i>Upon application</i>
ENROLLMENT DEPOSIT	\$1,500	<i>Upon acceptance</i>
REMAINING ANNUAL TUITION	\$10,500	<i>Paid on the 1st, monthly</i>
TOTAL WITHOUT AFTER SCHOOL	\$12,500	
AFTER SCHOOL	\$3,750	<i>Upon schedule</i>
MEAL PLAN	\$2,750	<i>Upon schedule</i>
TOTAL WITH ADD-ONS	\$19,000	

SIBLING DISCOUNT POLICY:

THINKschool is pleased to offer a tuition discount to siblings who are enrolled concurrently at the school. Families with two students at the school receive a 5% discount on the younger student. Families with two students at the school receive a 5% discount on the second student and a 5% discount on the third student. Families with more than three children at the school will be considered individually by the Head of School. This discount is applied to the tuition only of the younger/est siblings. For example:

Two Children at THINKschool

1st child - \$12,500

2nd child - \$11,250

Three Children at THINKschool

1st child - \$12,500

2nd child - \$11,875 | 3rd child - \$11,875

All students must be in the program at the same time in order to receive the discount.

TUITION PAYMENT SCHEDULE

Payments	Fee (Annual Tuition)	Fee (Meal Plan)	Fee (After - School)	Due Date
Non-Refundable Registration fee:	\$500	\$0	\$0	Upon application
Non-Refundable Enrollment Deposit:	\$1,500	\$0	\$0	Upon Enrollment
1st payment	\$750	\$275	\$375	Aug. 1, 2022
2nd payment	\$1,050	\$275	\$375	Sept. 1, 2022
3rd payment	\$1,050	\$275	\$375	Oct. 1, 2022
4th payment	\$1,050	\$275	\$375	Nov. 1, 2022
5th payment	\$1,050	\$275	\$375	Dec. 1, 2022
6th payment	\$1,050	\$275	\$375	Jan. 1, 2023
7th payment	\$1,050	\$275	\$375	Feb. 1, 2023
8th payment	\$1,050	\$275	\$375	Mar. 1, 2023
9th payment	\$1,050	\$275	\$375	Apr. 1, 2023
10th payment	\$0	\$275	\$375	May. 1, 2023

PAYMENT METHODS:

Families may finalize their bill in one or more of the following ways:

- 1. Cash/Venmo** – Please be sure that you receive a receipt from us showing the amount paid within 7 business days. Keep the receipt as it is your only evidence of payment.
- 2. Check/Money Orders** – Students whose checks are returned by their bank will be subject to a \$12.00 reprocessing fee and will be required to make all subsequent payments by cash or certified check.
- 3. Credit/Debit card (Visa, Master Card, Discover, or American Express)** – Parents must request and fill out a Credit Card Authorization Form prior to making a payment via credit or debit card. Please note that a processing fee of 3.99% is applied per credit/debit card payment.

PAYMENT DUE DATE/LATE FEES:

In accordance with **THINK** school policies, all monthly tuition payments are due before or on the first of the month. We allow a three-day grace period to submit your payment, with prior notice. On the fourth day, your total due will receive an initial late fee of \$50. Once a balance is 4-6 days late, in addition to the initial \$50 late fee, the balance receives a \$15 late fee daily, including weekends. Should a balance be 7 or more days late, in addition to the initial \$50 late fee and the additional \$15 daily late fees, including weekends, a family receives their first temporary unenrollment notice. The \$15 daily fees continue to be added during this time period on all days, including weekends. Should a balance continue and reach two weeks late, the student is no longer permitted to attend school until the balance is paid off or an agreement is met between the family and the school administration. Any and all agreements are entirely at the discretion of the school administration and are not obligated or guaranteed. The three-day grace period is also capped at one-time use. Additional late payments may not be subject to any grace period and will start accruing late fees instantly, from the 2nd of the month.

Please note that we offer seven different payment methods for your convenience – cash (paid on premises at an agreed-upon time,) check, money order, credit/debit card (3.99% fee,) Chase QuickPay or QuickPay with Zelle, PayPal, and Venmo. While we do understand that things come up, our payments and late fee policies are firm. We do, however, understand extenuating circumstances so ask families to please speak with the administration if anything comes up making the balance unattainable and we will do our best to work with you to arrange alternate payment options.

Should any family not make full tuition (and any fee) payments, the account may be sent to a collection agency. Should this occur, the family will be responsible for all collection costs, including agency fees, attorney fees, and court costs, in addition to whatever outstanding balance exists on the account. We ask for your understanding that we are a boutique school and do not receive any governmental or other such aid. We rely solely on your tuition payments to operate.

DAYS OF OPERATION:

SCHOOL YEAR:

The school year is defined in the school calendar and meets or exceeds the minimum days and hours of instruction prescribed by relevant laws or regulations. Parents will have access to the calendar on their Parent Portal as well as on our school website. Most instructional days are full days. For specific dates of instruction, early release, and other school year information, refer to the school calendar.

PLEASE NOTE: until the DOE releases their 2023-24 calendar, all dates within our calendar are subject to change.

The 2023-2024 school year consists of four Academic Quarters:

Quarter 1: September 11 - November 14

Quarter 2: November 15 - January 31

Quarter 3: February 1 - April 13

Quarter 4: April 14 - June 25

Closure for Holidays and Recess time:

THINK school will be closed for the following holidays and recess dates. Parents will be reminded through classroom newsletters, posters, and/or reminders from the teachers.

- Yom Kippur
- Thanksgiving Day + Day after Thanksgiving
- Winter Recess
- Midwinter Recess
- Spring Recess
- Memorial Day

One break per year deviates from the NYC DOE calendar breaks.

Closures due to Weather:

In an effort to protect the safety of parents, children, and staff, the school may initiate early closings, late openings, or closures when the weather makes road conditions hazardous. Other late openings or closings outside will take place when the school deems it necessary, and the school will notify parents by posting information on the Parent Portal and via email.

HOURS OF OPERATION:

THINK school is open from 8 AM - 4:30 PM, Monday through Friday. Classes are in session from 9 AM to 3:50 PM on all scheduled school days except half-days, which commence at 12:10 PM.

All students must be present for the entirety of the academic day.

Students may arrive at school as early as 8:00 AM and **no later than 8:45 AM**.

ARRIVAL AND DEPARTURE

Children must be at school and in their classroom by 8:45 AM. For parents bringing their children to school, please keep in mind that it's a must that all children be at school before 8:50 AM to have time to put away their belongings in their lockers and get to their homeroom classrooms.

Students arriving late to school will result in a loss of teaching material and disrupt the class.

Prompt arrival at school is a must. Arriving at school past 8:50 AM counts as a tardy for the day.

If your child has a doctor's appointment that would cause lateness, please inform the teacher and bring a doctor's note with you to excuse the lateness.

Morning Drop-Off starts at 8:00 AM. If you arrive before 8:00 AM, you may wait outside the school building. Please do not leave cars running or keys in the car when bringing children into the school.

When parents bring children to school, they must leave them in the presence of a staff member.

Our morning assistant staff will ensure your child gets into her/his class safely and is checked in.

Pick-up starts at 4:00 PM. Classes end at 3:50 sharp, so please give your child the time to get packed up and make their way downstairs to be picked up. Early dismissal is only permitted with valid reasoning.

When you pick up your child, you must message the family group about your arrival.

It is imperative that a parent makes the staff aware ahead of time that they are picking up their child.

IMPORTANT: Only those authorized in writing by the parent or guardian before pick up may pick up a child from the school. The school must be notified if someone other than a parent or someone already listed as a trusted pick-up person will pick up the child, and this person will be asked to present identification. Under no circumstances will a child be released to anyone without prior written permission. This includes parents of schoolmates or classmates. The school must be notified in writing, ahead of time, that their child(ren) will be picked up by someone different than those on the allowed pick-up list. Parents are solely responsible for updating this list should any changes be needed.

DAILY SCHEDULE:

The standard instructional day varies depending on grade level. Regardless of the grade level, however, the day includes courses or classes, transition periods or breaks, lunch, and recess. Students attend regular courses, elective courses, breaks, recess, and lunch during the times specified on the student schedule.

Sample Daily Schedule

	MONDAY	TUESDAY	WEDNESDAY	THURSDAY	FRIDAY
9:00 – 9:40	SCIENCE Ms. Pam	SCIENCE Ms. Pam	SCIENCE Ms. Pam	SCIENCE Ms. Pam	SCIENCE LAB Ms. Pam
9:45 – 10:25	HISTORY Ms. Shira	HISTORY Ms. Shira	HISTORY Ms. Shira	HISTORY Ms. Shira	HISTORY Ms. Shira
10:25 – 10:35	SNACK BREAK	SNACK BREAK	SNACK BREAK	SNACK BREAK	SNACK BREAK
10:40 – 11:25	LITERACY/LANGCOM Ms. Rachel	LITERACY/LANGCOM Ms. Rachel	LITERACY/LANGCOM Ms. Rachel	LITERACY/LANGCOM Ms. Rachel	LITERACY/LANGCOM Ms. Rachel
11:30 – 12:10	MATH Ms. Rachel	MATH Ms. Rachel	MATH Ms. Rachel	MATH Ms. Rachel	MATH Ms. Rachel
12:15 – 12:45	LUNCH	LUNCH	LUNCH	LUNCH	LUNCH
12:45 – 1:25	RECESS Ms. Julia	RECESS Ms. Julia	RECESS Ms. Julia	RECESS Ms. Julia	RECESS Ms. Julia
1:30 – 2:05	CHESS Mr. Viktor	STEAM Ms. Julia	CULTURES Ms. Julia	PARALLELS Ms. Julia	PERFORMING ARTS Ms. Julia
2:05 – 2:15	SNACK BREAK	SNACK BREAK	SNACK BREAK	SNACK BREAK	SNACK BREAK
2:15 – 2:55	LIBRARY Ms. Julia	LIBRARY Ms. Julia	LIBRARY Ms. Julia	LIBRARY Ms. Julia	LIBRARY Ms. Julia
3:00 – 3:50	COHORT	SPANISH Ms. Jessica	GYM Mr. Donald	SPANISH Ms. Jessica	ART STUDIO Ms. Julia
3:50 – 4:00	PACK UP	PACK UP	PACK UP	PACK UP	PACK UP

CLASS INSTRUCTION TIME BREAKDOWN:

All grades have a variety of courses, including core, supplemental, and breadth courses.

Grade 1 per day:

Math (40 mins.) | English (45 mins.) | Science (40 mins.) | History (40 mins.) | Library (40 mins.)

Grade 1 per week:

Supplemental courses (~ 3.5 hours) | Breadth courses (~ 1.5 - 2 hours)

Grade 2 per day:

Math (40 mins.) | English (60 mins.) | Science (40 mins.) | History (40 mins.) | Library (30 mins.)

Grade 2 per week:

Supplemental courses (~ 3.5 hours) | Breadth courses (~ 1.5 - 2 hours)

Grade 3 per day:

Math (40 mins.) | English (60 mins.) | Science (40 mins.) | History (40 mins.) | Library (30 mins.)

Grade 3 per week:

Supplemental courses (~ 3.5 hours) | Breadth courses (~ 1.5 - 2 hours)

Grades 4-5 per day:

Math (60 mins.) | English (60 mins.) | Science (40 mins.) | History (40 mins.) | Library (25 mins.)

Grades 4-5 per week:

Supplemental courses (~ 3.5 hours) | Breadth courses (~ 1.5 - 2 hours)

A photograph of a young boy and girl looking at a book together. The boy, on the left, has dark hair and is wearing a black shirt. The girl, on the right, has blonde hair with a large white flower accessory and is wearing a light-colored sweater. They are both looking intently at an open book held between them. The book's page shows the title "Just Say Right!" and several lines of text, including "After school, sometimes I see / From home, I hear you say / There's no such thing as a free lunch / There's no such thing as a free ride / You can't get something for nothing / You can't get something for nothing / You can't get something for nothing / You can't get something for nothing". The background is white with faint green geometric patterns.

We offer an exciting and advanced curriculum to keep our students learning and discovering their interests through hands-on work and interest-based instruction.

Our goal is to teach outside the box so that each student is recognized for the type of learner they are. Our curriculum fosters a love for learning while simultaneously challenging students to their full potential.

We know our workload and expectations are high, but with a dedicated family support system coupled with our nurturing and loving environment, students find joy in the challenge and thrive.

Below are some of our courses, offered to all students in grades K-5.

CORE CURRICULA:

Literacy

As a program specializing in literacy teaching, our curriculum focuses on the vital aspects of linguistics and language acquisition to teach our students to read. From K-2, students are taught phonetically to enhance decoding skills. We utilize a variety of texts, stories, and reading the world around us as we teach our K-2 learners how to read, and our K-5 learners to comprehend and infer.

Writing

Branched off of the approaches used for teaching literacy, students will be taught spelling as we delve into writing instruction. Our students learn about writing both as a structured system as well as an outlet for creative expression. With a focus on grammar instruction and the mixing of varying styles, students learn to write stories, comprehensive responses, and more!

Mathematics

Blending logical components of common core with traditional math practices, we utilize Singapore Math as a baseline. Our goal is to teach children the value of numbers and the logic of operations. Students learn to see math in the world around them and explore the varying applications. We discover the history of math in the world to understand the "how" and "why" it came to be.

Science

We begin the year by explaining to children what science truly is - and what it is, in all actuality, is the reason we have SLIME! Our science curriculum spans a variety of fields, including biology, earth science, chemistry, and more! Through a hands-on, project-based approach, we teach students the fundamental knowledge of sciences so they can apply it to the world around them.

History

Our Social Studies curriculum covers a variety of topics including US, World, and Ancient History. Through interactive lessons, projects, and texts, we explore the country we live in and our justice system, the world we are a part of and how we coexist, and the world we came from and how innovation and human creativity gave us what we have today.

SUPPLEMENT COURSES:

Physical Education

Our physical education courses vary by semester. The curriculum throughout the year includes yoga, cross-fit Zumba, and more. Throughout the year, physical education also includes Health classes where students learn about healthy living and smart choices. Students have multiple "brain breaks" throughout each day as well to boost adrenaline and recharge!

Art and Visual Arts

Students are taught on a spectrum of applications. We begin by learning about different forms of art, art in the world around us, the application of our talents, and visual art creation. Teachers use hands-on methods to create art of varying styles, including graphics, drawing, painting, and more. The goal is to allow students a platform through which they discover their talents.

Performing Arts

Performing arts will be taught and presented through a multitude of topics including drama and acting, appreciation of film and Broadway, understanding backstage works, and more. Children will put on a presentation during the school year if possible! We will also learn about the history of film and media and about influential actors. We will also do a trip to a show if possible!

Music

Music is taught to all grade levels and covers a variety of instruction including musical history, appreciation, application in the real world, and instrument knowledge. Students will learn a variety of sounds, music genres, and partake in song-writing classes. Grades 3-5 will also learn about careers in music and explore a symphony/concert (if reopened.)

Cultures of the World

Cultures of the world is an interactive class through which students learn through an anthropological lens. Starting with exploring what culture is and how we culturally identify, the class expands throughout the year with lessons about the more familiar cultures as well as some of the more unique cultures in remote villages around the world.

Parallels

Our Parallels course helps students associate each individual subject to the real world by bringing their knowledge to real-world scenarios. Students develop an understanding and value of what they learn, whether it be bargaining at a market utilizing math and communication, or understanding writing to start a blog, students are given the opportunity to explore.

BREADTH COURSES:

Foreign Language

Our foreign language classes are for students in all grades and teach children the fundamentals in an immersive and interactive manner. Students will learn about the culture surrounding the language as well and delve into the understanding of communication and grammar. Throughout the year, we also hold culture days and projects to further learning.

LangCom extension: Communications

These classes cover topics including communication etiquette, annunciation, diction, vocabulary, and proper speech. Through this class, we teach children the value of great communication skills and how these apply to the most basic things in life - like asking mom for extra ice cream! The class culminated in a public speaking seminar where children work on a presentation.

Psychology

To bring self and social awareness, students take 1-2 quarters of psychology, depending on the grade level. For younger learners, we focus on teaching how to control and show emotions, such as anger management and conflict mediation, whereas older grades learn about psychology through a scientific, research-based approach.

Chess

All students participate in weekly chess classes. Starting with learning the foundations of the game and ending with play strategies, students explore the logical and strategic elements that come alongside the game of chess. The year culminates with a school-wide chess tournament across all grades.

LangCom extension: Publishing

Students will learn about the world of publishing, job roles, and the creative elements that go into writing and publishing a book, magazine, and more. The semester culminates with a publication project wherein each student creates their own publication and then pitches the idea for publishing it. Each student will then get their book printed!

STEAM

Classes are equipped with iPads and varying engineering tools for students to learn the applications of science, technology, engineering, art, and math through interactive, game-like platforms. Students are guided through hands-on activities, experiments, and projects to apply their knowledge to real-world applications of the topics. Students help create varying projects to gain a better understanding of how the future will be and will continue to be developed.

Current Events

We're kicking it old school for this class and offering students a glimpse into current world events through the lens of newspaper print. Students engage in weekly assignments of finding, reading, and describing an article of their choice from a major newspaper and then discussing both the article and its topic's implication in class through a peer discussion.

CLASSROOM EXPERIENCE



FACILITIES:

THINKschool has the following facilities:

- **Grade Modern Classrooms** inspire kids to learn. Our spacious classrooms are filled with art, living plants, music where appropriate, flexible seating, and fast internet access. Students find comfort in their classrooms alongside optimal space for learning and inquisitive thought. Each Classroom has its own individual theme, curated specifically with the age of the students within it to help foster curiosity and provide an appropriate developmental environment. Students enjoy the bohemian farmhouse environment, immerse in travel around the world, walk the red carpet of Hollywood, and much more.
- **Lunchroom** that can accommodate up to 40 Students/Parents/Teachers
- **Science laboratory** where students can perform research and experiments. Our well-designed laboratory will make science experiments fun and help students achieve good academic results. The lab has both laboratory and safety equipment for science, high-speed internet, and i-Pads.
- **Library** supplied with various resources, including reading and research materials for all ages. A school library provides more than just books, computers, and other technology. The school library is a social space to meet, think, collaborate, research, learn, share, and relax.
- **Gymnasium** equipped with various exercise and play equipment to hold such classes as dance, yoga, and physical education.
- **Art Studio** at **THINK**school fosters creativity in children through drawing, painting, printmaking, and sculpting. We pay close attention to art projects that are enriching, educational, and creatively impactful.
- **Outdoor Space.** Research has shown that children stay healthier when they have daily outdoor play. Based on this information, outdoor play will be included in our program on a daily basis.
- **Private Study Rooms** where students can escape for individual work or a quiet space
 - **Administrative** Offices and Staff Rooms/Lounges

GRADE STRUCTURE:

THINKschool is a K - 5th-grade private elementary school.

Kindergarten – 1 class

1st grade – 1 class

2nd grade – 1 class

3rd grade – 1 class

4th grade – 1 class

5th grade – 1 class

CLASS RATIOS:

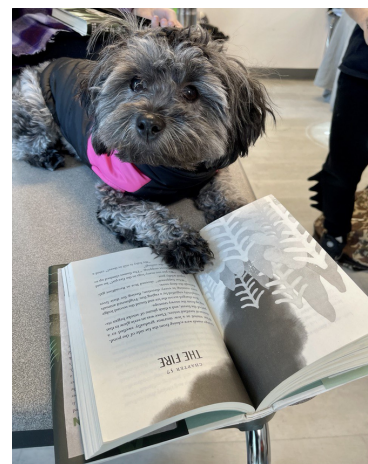
At **THINK**school, we offer an impressively low student-teacher ratio of 15:1. Each class has a head teacher as well as floating teacher assistants, supporting teachers and students. To assure that each student receives individualized attention, we provide a small classroom environment as our core.

ANIMALS

We strive to promote healthy child development and greatly believe that the school environment should provide a solid education, but also a nurturing environment.

As we continue to modernize and implement new techniques in our school, we offer a pet program. Dogs are proven to have multiple benefits for children. Allowing our students to love, cuddle, and interact with our school dog helps them grow emotionally, alleviate stress, build confidence, and learn important emotional support tactics and the responsibility of caring for another living thing.

All students are immersed in our puppy program, and whenever they need a few moments to de-stress.



NUGGET

Hypoallergenic, Shitzu-poodle
born on November 12, 2020

BIRTHDAYS:

We offer many special events throughout the school year. Birthdays and holidays are an especially exciting time for young children and the school will be pleased to help your child celebrate with classmates and staff. Please discuss this with your child's teacher prior to the date.

Birthday policies are readily available on the Parent Portal.

SCHOOL BIRTHDAY POLICIES

We think birthdays are a BIG deal!

AND WE LOVE TO CELEBRATE THEM IN SCHOOL!

HERE ARE A FEW NOTES TO MAKE SCHOOL CELEBRATIONS WONDERFUL!

PLEASE BRING SMALL PLATES AND FORKS/SPOONS FOR CAKES!	GOODY BAGS: IF YOU'RE BRINGING GOODY BAGS, THEY MUST BE FULLY PACKED AND SEALED BEFORE BEING DROPPED OFF AT SCHOOL. PLEASE LABEL GOODY BAGS WITH STUDENTS' NAMES!
--	--

DON'T FORGET CANDLES!

**YOU CAN ORDER PIZZA FOR THE CLASS IF YOU'D LIKE.
(DELMAR'S PIZZA PREFERRED AS A TRUSTED SOURCE FOR CLEANLINESS!)**

PLEASE INFORM YOUR TEACHER IF YOU PLAN ON DOING AN IN-SCHOOL CELEBRATION SO THAT SHE/HE CAN PLAN THE TIME ACCORDINGLY!

OUTDOOR EXCURSIONS



OUTDOOR PLAY

Our program includes outdoor experiences in its daily activities during all seasons. Students are engaged in a minimum of thirty minutes of outdoor play where they can be active. This includes, but is not limited to, running, jumping, climbing, and so on. The outdoor environment is an extension of the classroom and provides students with opportunities to explore and continue to build skills.

We will limit the amount of time outside when the temperatures are too hot or too cold. Children will not have outside recess when the temperature drops below 40 degrees or rise above 85 degrees. If the situation requires, we will also adjust the outdoor time due to rain, threatening weather, etc. On days that outdoor play is not provided due to these conditions, we will include a time for indoor gross motor activities in our gymnasium. Please send your child with the proper clothing so they may be comfortable and safe whenever we are outside.

TRANSPORTATION

For the 2023-2024 school year, **THINK**school will not offer transportation for enrolled students during morning drop-off and evening pick-up times. All families will be informed that they can request transportation services from the school district by April 1st.

FIELD TRIPS

We embark on fun, educational, and interactive trips to museums, parks, and child-friendly attractions.

SAMPLE TRIPS

- DiMenna Children's Museum
- Statue of Liberty
- New York Hall of Science
- Metropolitan Museum of Art
- Liberty Science Center
- Museum of Natural History

The transportation will be offered for **THINK**school students during field trips from the school to the location and back. Student parent/guardian will sign the Parent Consent Form before the field trip date.

THINKschool is responsible for ensuring that all of the following requirements are met:

1. Any vehicle used for transporting staff or students shall have either a valid NYS Department of Motor Vehicles or, where required, a valid NYS Department of Transportation Inspection Sticker. Any vehicles used will have a current registration. Any vehicles used will be equipped with at least one first-aid kit, tools, fire extinguisher, flares, and any other necessary safety tools.
2. All vehicles shall be operated by a driver who is at least 18 years old and possess a CDL as required.
3. At no time shall the occupancy of the vehicle exceed its rated capacity.
4. Every child will be secured in safety seats or safety belts as required by law.
5. A child will never be left unattended in any motor vehicle or other form of transportation.

NUTRITION



HOT LUNCH OPTIONS

At **THINK**school, our mission is to provide students with balanced and nutritious snacks and lunches.

We follow and believe in the magnitude of scholarly research surrounding the correlation between nutrition and brain health. Per this belief, we will serve quality nutritious food to all our students daily. All food is home-style, with a menu crafted based on the proper nutrients and food groups for children for optimal energy reserves throughout the day! All snacks throughout the day are likewise pre-planned and include organic, healthy foods, and nutritious options.

WHAT WE OFFER

- Healthy, home-style hot lunch
- Healthy and organic filling snacks 2 times per day
- Variety of homemade drinks, including organic iced teas, lemonades, and varying juices

WHAT PARENTS CAN CHOOSE

- Just Hot Lunch
- Just Snacks
- Both Hot Lunch + Snacks
- Home-Packed Lunch

MEAL PLAN

As part of our team, we cater meals prepared fresh daily. Each Lunch meal includes four components: a hot soup appetizer, an entree with meat or meat alternative, a side such as potatoes, rice, pasta, etc., and a side salad or vegetable. All food is homestyle, served in increments of time to help digestion, and yummy for even the pickiest eater. Our menus are created with a nutritional mindset to keep kids healthy, energized, and happy. Every day is balanced with the perfect combination of fruits, veggies, proteins, grains, and more.

MENU

*All food is freshly prepared on-site and daily.
Menu items, especially snacks, may change without
notice based on supply and seasonal availability.*

TUESDAY

	LUNCH	SNACKS
WEEK 1	First course: barley soup Entrée: Chicken Caesar salad & cheesy pasta	cereal, almond milk & fruit animal crackers & veggies
WEEK 2	First course: chicken soup Entrée: macaroni po flotski	pancakes & jam mandarin & cookie

THURSDAY

	LUNCH	SNACKS
WEEK 1	First course: vegetable soup Entrée: turkey burgers & baked potatoes	pancakes & jam rice cake & fruit
WEEK 2	First course: chicken soup Entrée: chicken burgers & sweet potatoes	yogurt & berries cheese & crudités

MONDAY

	LUNCH	SNACKS
WEEK 1	First course: chicken soup Entrée: chicken with pasta	muffin with egg fruit and a cookie
WEEK 2	First course: chicken soup Entrée: macaroni po flotski	oatmeal & fruit pretzels & grapes

WEDNESDAY

	LUNCH	SNACKS
WEEK 1	First course: matzo ball soup Entrée: Turkey meatballs & rice	yogurt & granola mini pizza bites
WEEK 2	First course: vegetable soup Entrée: chicken cutlets & pasta	bagel & cream cheese pretzels & grapes

FRIDAY

	LUNCH	SNACKS
WEEK 1	First course: chicken soup Entrée: hot dogs & buckwheat	crepes with fruit crackers & veggies
WEEK 2	First course: chicken soup Entrée: Pelmeni & veggies	waffles & syrup kani salad & crackers



SNACK PLANS

Students will have a variety of options for their daily snacks including fresh fruit, fresh vegetable, yogurt, varying cheeses, crackers, cookies, chips, graham crackers, pita bread/bagels with cream cheese, granola bars, and other balanced, child-friendly snack foods as accessible per season, etc.

FOOD ALLERGIES – IMPORTANT NOTICE

Parents of students with allergies: the school administrator will notify the class teacher and any relevant assistant staff when a student has a verified food allergy. A copy of the doctor's order will be kept on file.

A highlighted notice is put on the child's account in the dietary notes with the list of food restrictions.

Parents/Guardians applying their child for THINKschool are solely responsible for informing school administration should the student have any verified food allergy and or dietary restrictions prior to the start of the child's enrollment and start date.

SUGGESTIONS FOR PACKING HEALTHY LUNCHES

If parent/guardian has chosen to pack their lunch, it is very important to avoid packing non-nutritious foods in their lunches but rather include more healthy options so as to complement our goal for nutritional importance for a child's learning and development.

Home Packed Snack Suggestions	Home Packed Lunch Suggestions
Fresh vegetables, Pretzels, crackers, bagels, Low-fat muffins, Granola bars, Dried fruit, Fresh fruit	A portion of protein, side of a grain, a portion of a vegetable, such as a small salad, fresh veggies, etc.

CLASSROOM SNACK GUIDELINES

- Snacks should not be too messy for eating in the classroom and offer easy opening/clean up
- All fresh fruits and vegetables must be pre-cut for easy servings and be washed beforehand. All snacks must be brought in closed and secure baggies for easy handling.
 - Napkins and necessary and utensils must be provided from home
- There is NO refrigeration available for snacks/lunches in the classroom. If refrigeration is needed, snacks/lunches must be packed in a cooler.
 - It is preferred that snacks are pre-packaged, sealed, individually wrapped, and be nut-free.
- All store-bought treats must remain sealed, in their original package, and contain the manufacturer label, listing all ingredients and allergens

The following items are NOT acceptable classroom snacks:

All nuts are NOT permitted (including but not limited to peanuts, cashews, almonds, walnuts, pecans, etc.) Peanut butter or other nut butters are NOT permitted. Snacks that contain statements such as "may contain traces of...." or, "Made on equipment that manufactures or processes..." or, "Made in a facility that manufactures...." are NOT considered to be safe due to cross-contamination of the allergen. All parents will sign a waiver agreeing that if the snack/lunch they provided for their child that day doesn't meet the requirements/restrictions we set forth, their child will be provided with the school lunch/snacks that day, adhering to any necessary dietary restrictions/allergies, and charged for any meals/snacks consumed that day.

COMMUNICATION

Communication is extremely important to us. Regular communication between school and home can improve your child's school experience. We are committed to creating a strong home and center connection by developing a process of open, honest communication with you regarding your child's development and experience at school. This includes a continual exchange of information between you, the teacher, and management.

As a school, we are a community of children, parents, and staff all interacting and sharing our lives together. In a community, people work closely together and, hopefully, interactions are positive, helpful, kind, and understanding. Yet it is to be expected that from time-to-time people will experience some conflict, some concerns, and some difficulties. When these mistakes occur, we want you to tell us. As a collective and involved staff, it is our goal to offer your family the best services possible.

HOW TO CONTACT US

A Parent may contact any member of the School management or staff by email on Parent School Portal. The My School Works Portal is the primary method of communication between parents, teachers, and staff with regard to a student's academic performance or classroom behavior.

If you have any questions or concerns regarding the policies and procedures of **THINK**school, we encourage you to first contact your child's teacher. If further consideration is needed, please contact the school administration directly. Parents should not use email in the case of an emergency; rather, they should call the School directly or a class teacher.

While we encourage parents to use email to communicate any issues of concern, the demands of the School staff may limit their ability to address such communication or concerns immediately.

Nevertheless, the staff member will acknowledge the communication within three working days and provide information on when the parent can expect a full response. If a parent does not receive an email response within three working days, she/he should call the School front office and schedule a meeting.

FORMS OF COMMUNICATION

1. MY SCHOOL WORKS

Our new School Management System is a very useful communication method, that will definitely help our teachers and parents to have better communication concerning the students' progress. Once offered enrollment at THINK School you will receive access to My School Works. The best way to stay informed about what is happening here, at **THINK**school, is to check your parent portal.

There you will find useful information about school activities and calendar reminders, view homework assignments and topics covered during the lesson, track grades, attendance, and behavior, get access to bills, and much more. All email communication should be done through the parent portal! We encourage parents to check the portals daily, as you may miss important announcements otherwise.

2. PARENT-TEACHER CONFERENCES

THINKschool conducts Parent-Teacher conferences several times each year. During the conference, you will review a portfolio of your child's development along with an assessment from your child's teacher.

Parent-Teacher conferences are held on a regular basis to discuss your child's progress, adjustment to the school, and other issues of concern to both parents and teachers. Additionally, classroom teachers complete report cards every quarter for your review. The purpose of these in-depth progress reports and conferences is to identify the children's interests and needs, to improve curriculum, to adapt teaching practices and the environment, as well as to plan for program improvement.

3. PARENT-TEACHER APPOINTMENTS

Teachers are always willing to discuss any issues, questions, or concerns you may have regarding your child. You can schedule an appointment with your teacher if you feel that an email conversation or phone call is not enough.

4. SOCIAL MEDIA

We take social media in a very serious way and we believe that transparency is a very efficient way to improve the performance of the school and a great way to share fun moments from school days.

Teachers will also share photographs with you, highlighting your child's activities, as well as the activities of the entire class.

FROM ALL OF US AT THINKSCHOOL,
we welcome you home

